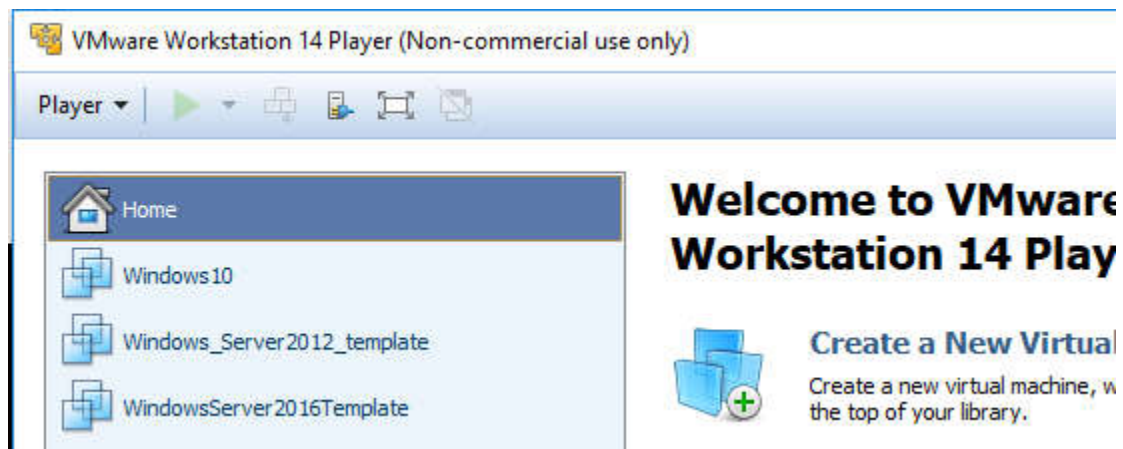
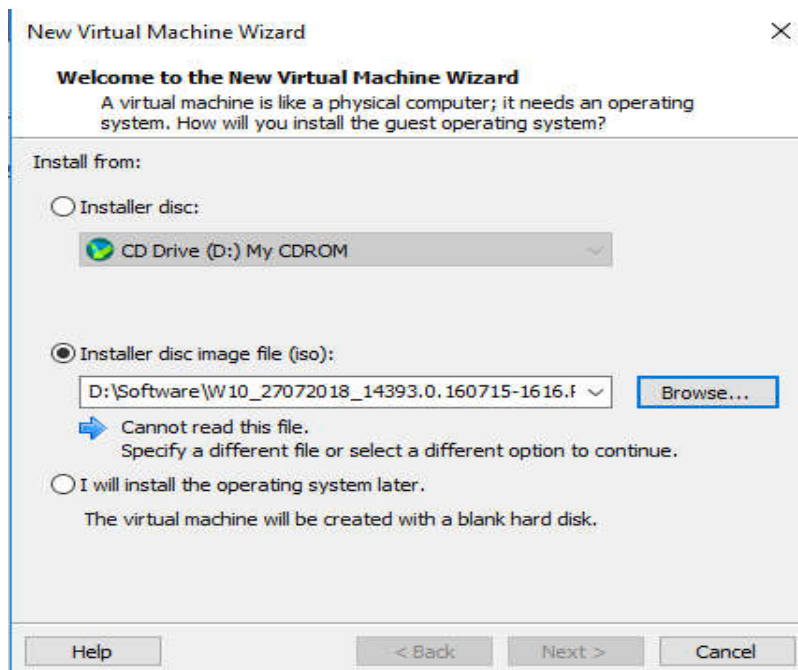


How to install ESXi on VMware Workstation Player

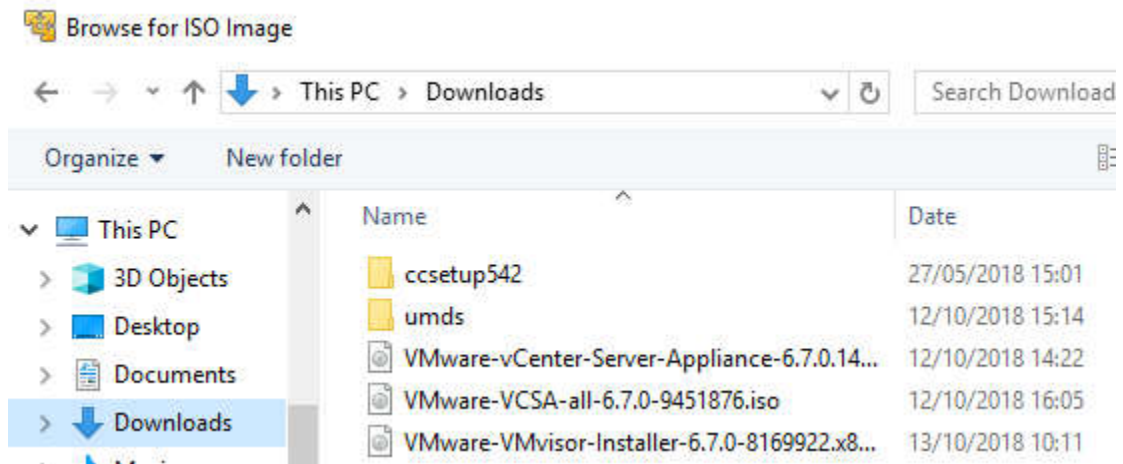
Start VMware Workstation player and select Create a New Virtual Machine.



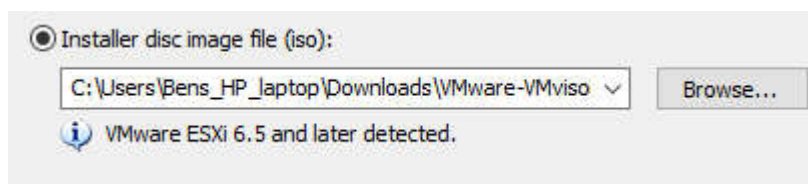
Select the source from where you start the installation. In this example I use the ISO file, downloaded from VMware.com



Select Browse

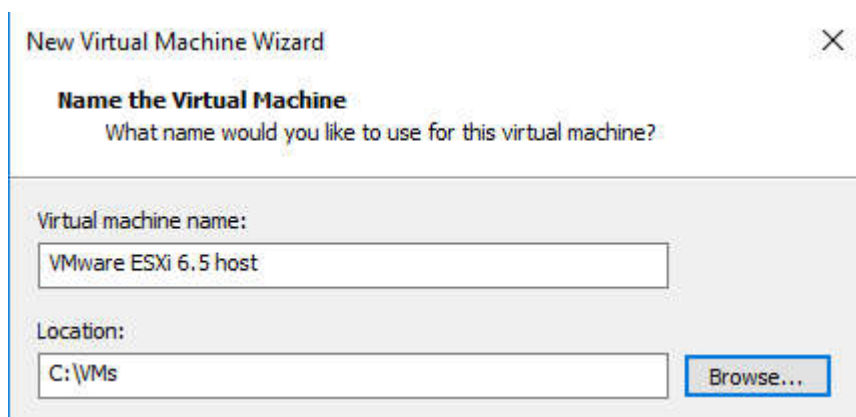


Select the installer ISO file and click open



click next

Give your VM a name and a location to store the VM files.



Click next

Specify Disk Capacity

How large do you want this disk to be?

The virtual machine's hard disk is stored as one or more files on the host computer's physical disk. These file(s) start small and become larger as you add applications, files, and data to your virtual machine.

Maximum disk size (GB):

Recommended size for VMware ESXi 6.5 and later: 40 GB

 Store virtual disk as a single file Split virtual disk into multiple files

Splitting the disk makes it easier to move the virtual machine to another computer but may reduce performance with very large disks.

Recommended size is 40Gb, you can make it larger.

Then you will get a summary

Ready to Create Virtual Machine

Click Finish to create the virtual machine and start installing VMware ESXi 6.5 and later.

The virtual machine will be created with the following settings:

Name:	VMware ESXi 6.5 host
Location:	C:\VMs
Version:	Workstation 14.x
Operating System:	VMware ESXi 6.5 and later
Hard Disk:	20 GB, Split
Memory:	4096 MB
Network Adapter:	NAT
Other Devices:	2 CPU cores, CD/DVD, USB Controller, Printer

 Power on this virtual machine after creation

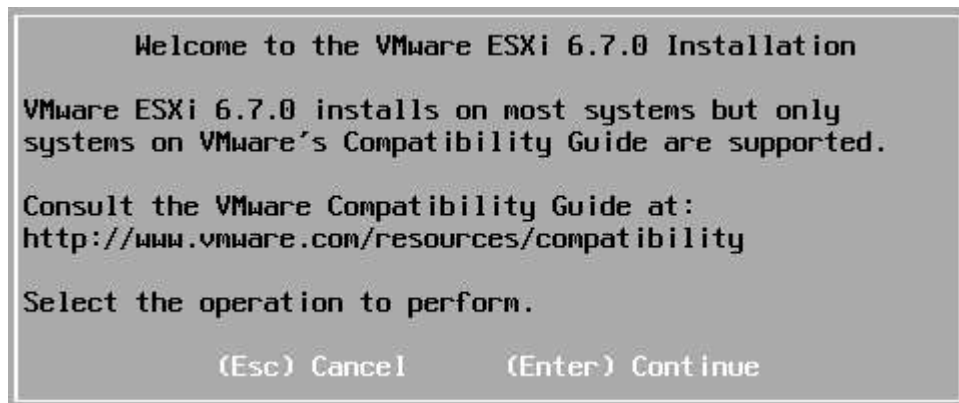
< Back

Finish

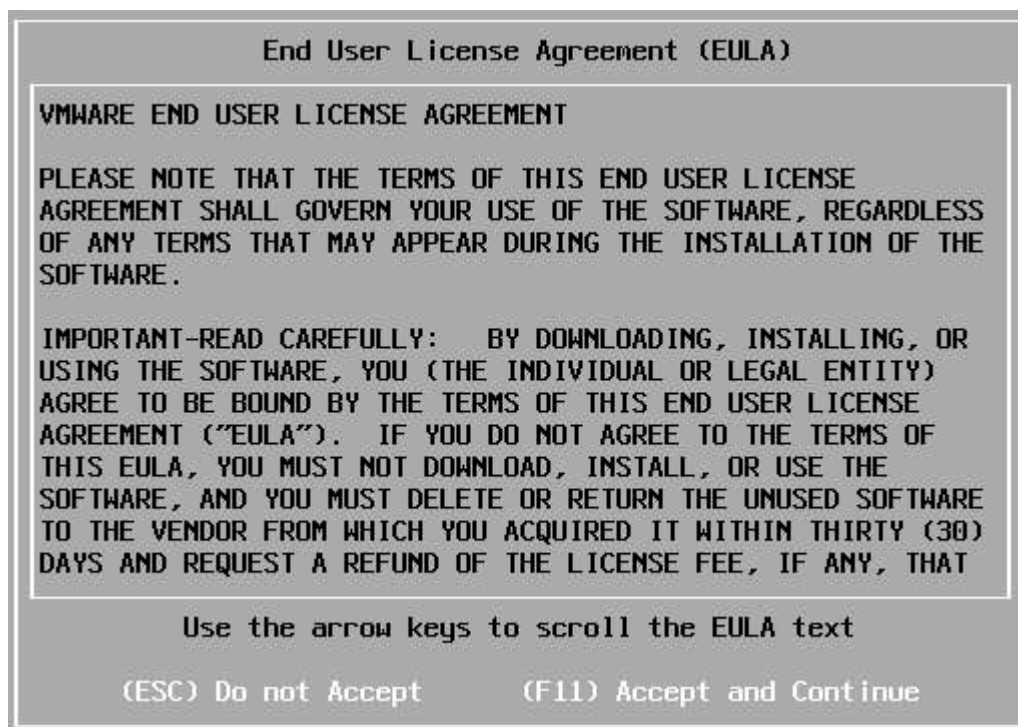
Cancel

Click Finish and your VM will be created.

After a few seconds, you will see

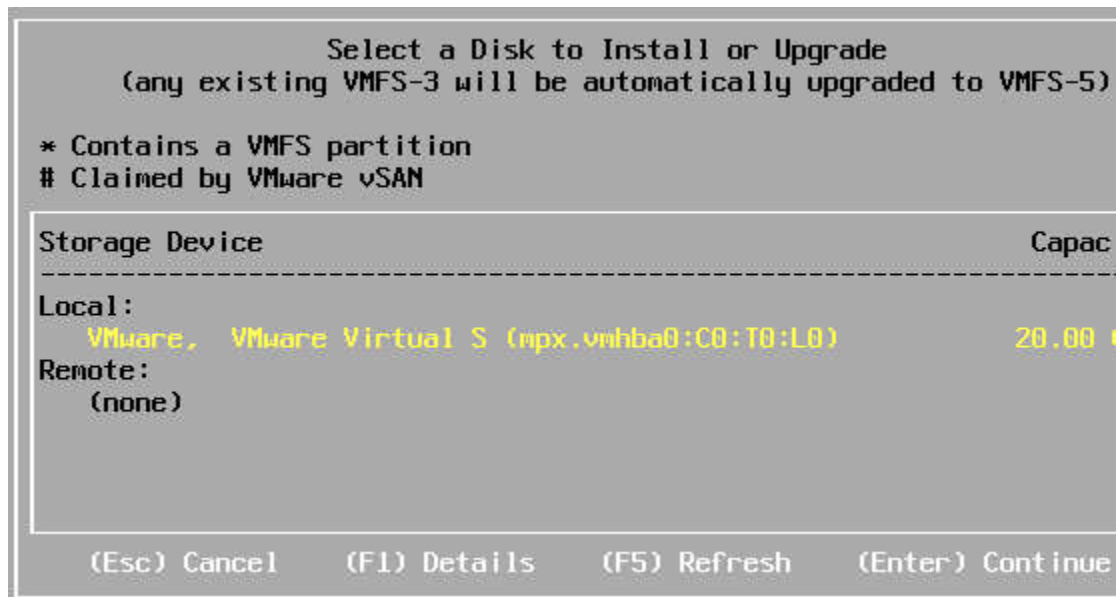


Press the Enter key

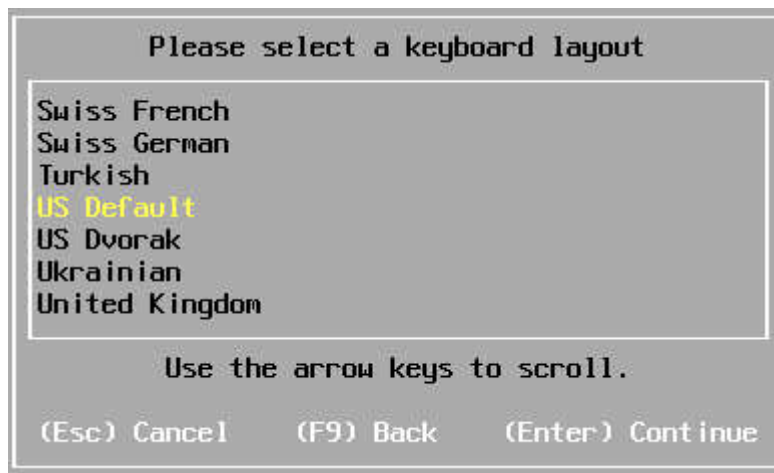


Press the F11 key

Select your disk, in my example it's just a 20gb hdd



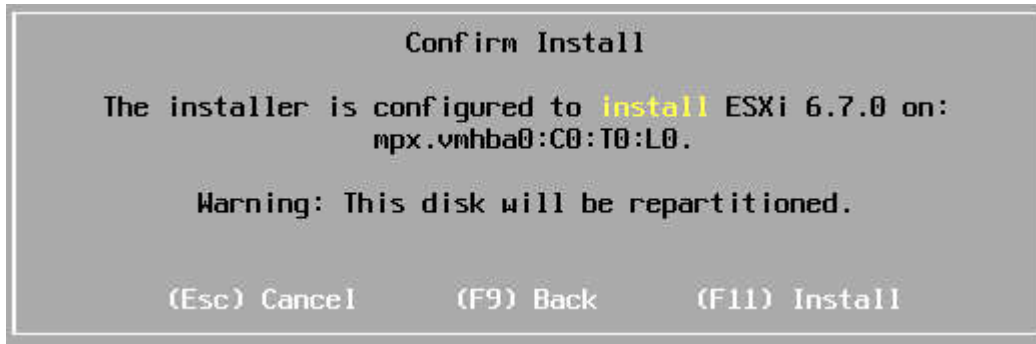
Press Enter to continue



Press Enter to continue



Fill in a Password and remember it!! And Press Enter to continue



Press the F11 key to continue

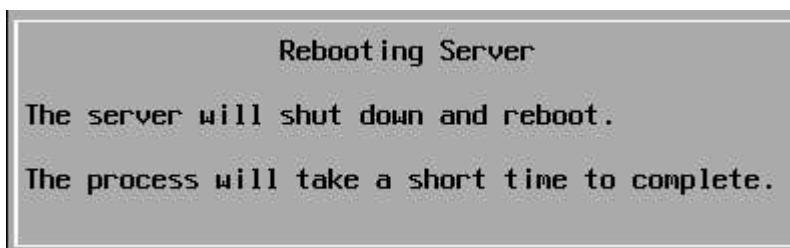


ESXi will now be installed

After a few minutes, you will see

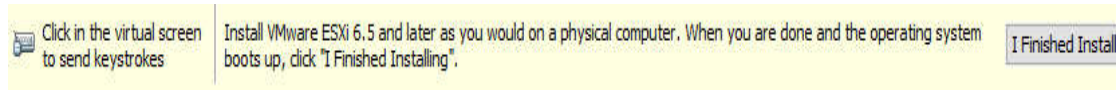


Press the enter key to reboot your new VM



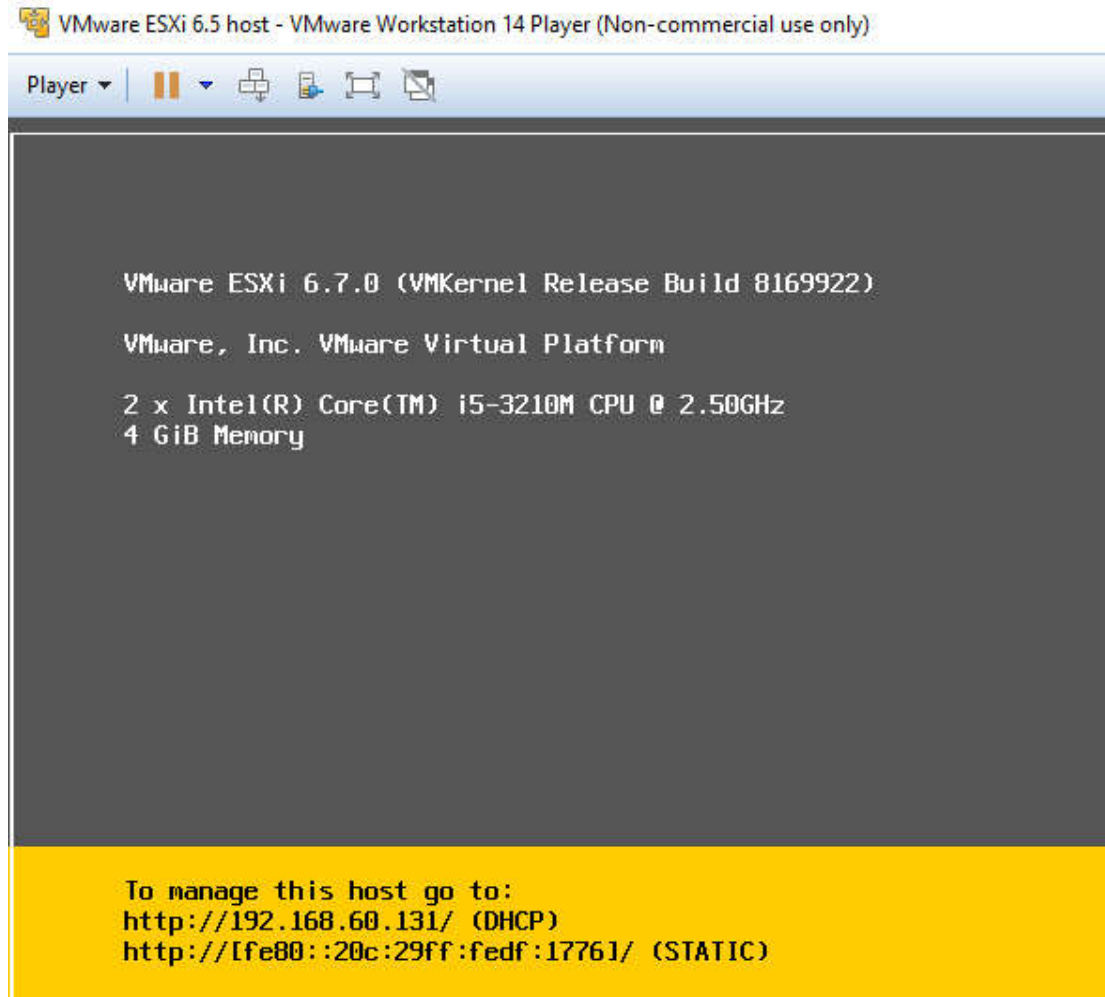
it will take a few seconds

In the bottom you will see



Click I Finished Installing, the line will be removed.

When booted you will see the yellow screen of VMware



Open a browser session and goto the website of this host, in my example 192.168.60.131

So typ in <http://192.168.60.131>

From now you have a ESXi server running.

Now you can change network settings or use it as VMware ESXi host.

